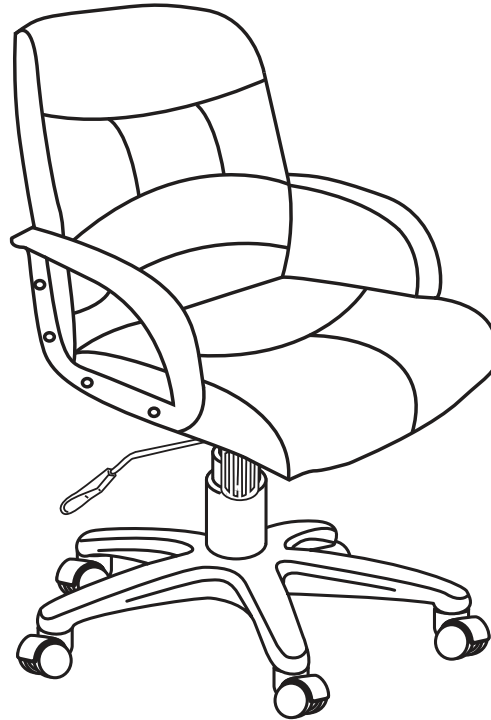
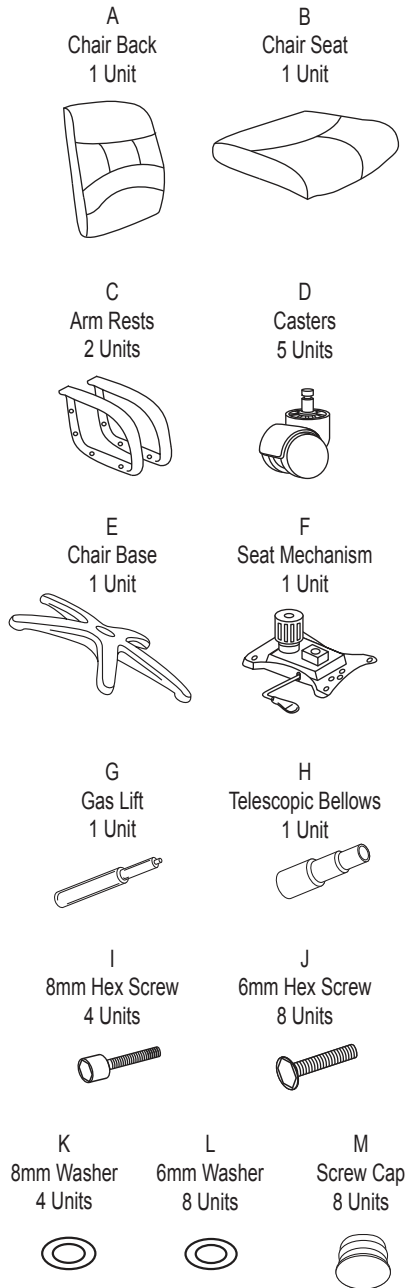


Model 508-LX Leatherette Mid-Back Chair

Parts Listing



WEIGHT CAPACITY: 250 lbs.

Assembly Notes:

During assembly, hand tighten screw only when all screws are in place, you may then tighten all screws completely.

CAUTION:

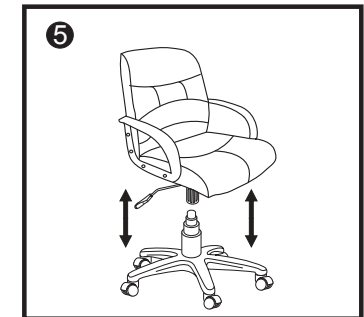
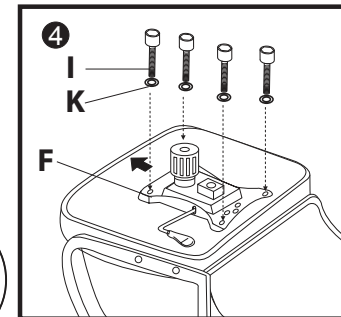
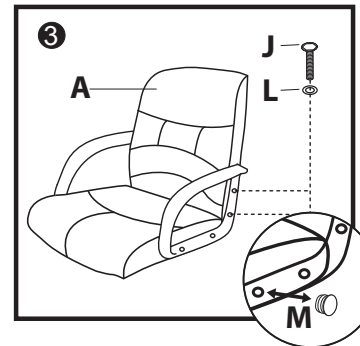
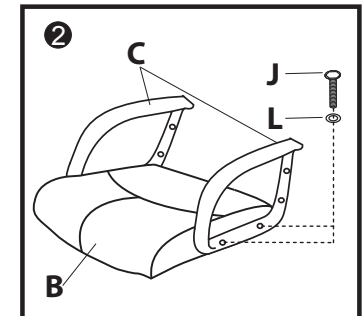
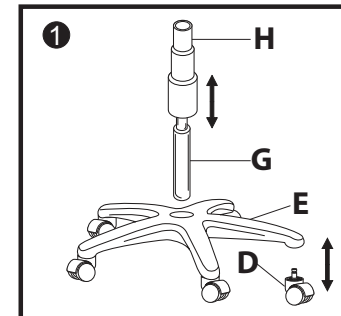
1. Do not use this chair as a step ladder.
2. Check for loose screws and tighten them every 6 months.

Assembly Instructions



Tools Needed: Phillips Head Screwdriver
Please read all instructions before assembly.

- Step 1:** Insert Casters (D) into Chair Base (E). Insert Gas Lift (G) into hole in Chair Base (E). Cover Gas Lift (G) with Telescopic Bellows (H).
- Step 2:** Attach Arm Rests (C) to sides of Chair Seat (B) using 6mm Screw (J) and 6mm Washer (L). Tighten with Allen Wrench.
- Step 3A:** Attach Chair Back (A) to Arm Rests (C) using 6mm Screw (J) and 6mm Washer (L). Tighten with Allen Wrench.
- Step 3B:** Cover screw holes with Screw Caps (M). Press in firmly.
- Step 4:** Attach Seat Mechanism (F) to the bottom of Chair Seat (B) using 8mm Screws (I) and 8mm Washers (K).
- Step 5:** Place chair body onto Chair Base (E) by inserting top of Gas Lift (G) into hole in the center of Seat Mechanism (F). Press down firmly on Chair Seat (B) to secure onto Chair Base (E).



ofm
Furniture For The Real Office™

161 Tradition Trail Holly Springs, NC, 27540
800-520-7471 (voice) 919-362-4765 (fax)
919-303-6389 (voice) www.ofminc.com
support@ofminc.com