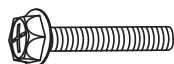


Model 122 / 122-DK Computer Task Chair

Parts Listing

A
6x25mm Screw
10 Units



B
Large Washer
4 Units



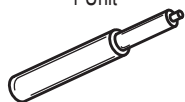
C
Small Washer
6 Units



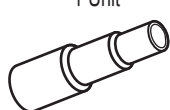
D
Telescopic Bellows
1 Unit



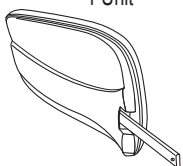
E
Gas Lift
1 Unit



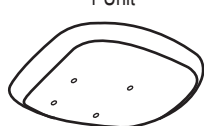
F
Seatback Bellows
1 Unit



G
Chair Back
1 Unit



H
Chair Seat
1 Unit



I
Chair Base
1 Unit



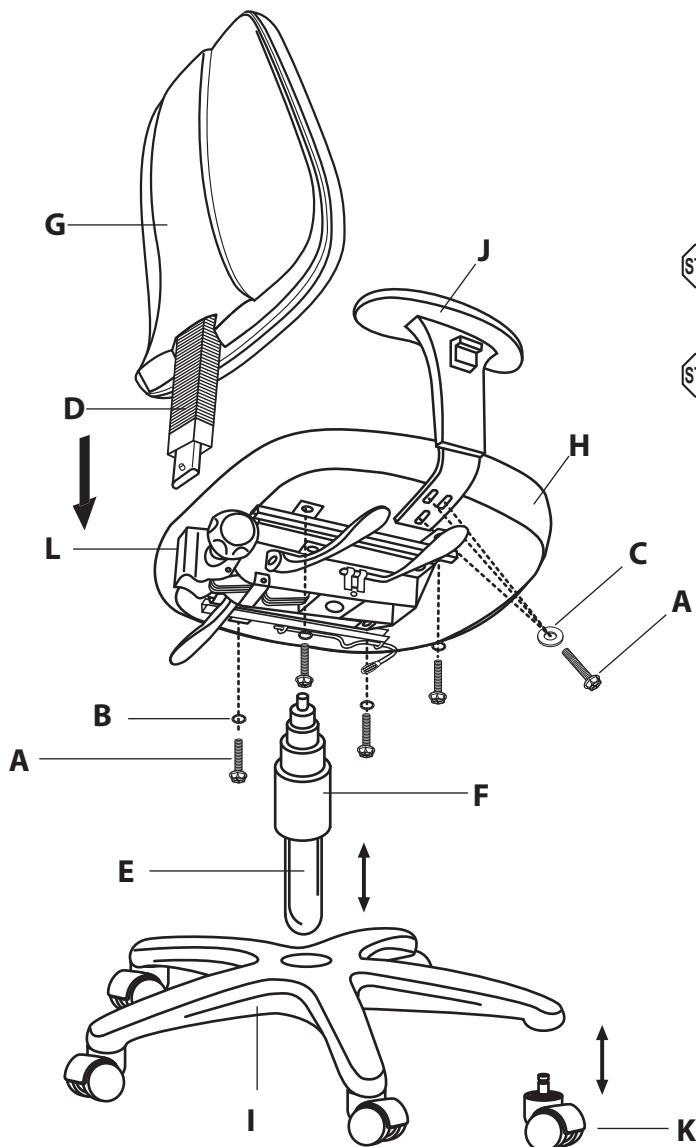
J
Chair Arms
2 Units



K
Casters
5 Units



L
Seat Mechanism
1 Unit



WEIGHT CAPACITY: 250 lbs.

Assembly Notes:

During assembly, hand tighten screw only when all screws are in place, you may then tighten all screws completely.

CAUTION:

1. Do not use this chair as a step ladder.
2. Check for loose screws and tighten them every 6 months.

Assembly Instructions



Tools Needed: Phillips Head Screwdriver
Please read all instructions before assembly.

Step 1: Insert Casters (K) into Chair Base (I).



If you are assembling a model with a DK Foot Ring please proceed to subsequent pages for drafting kit assembly instructions.

Step 2: Insert Gas Lift (E) into Chair Base (I), and cover with Telescopic Bellows (F).

Step 3: Place Chair Seat (H) upside down on flat surface, and align holes in bottom of seat with four holes in Seat Mechanism (L). Attach Seat Mechanism (L) using 6x25mm Screws (A) and Large Washers (B). Tighten with screwdriver.

Step 4: Attach Chair Arms (J) to Chair Seat (H) using 6x25mm Screws (A) and Small Washers (C). Tighten with screwdriver.

Step 5: Place Seatback Bellows (D) over attached bar on Chair Back (G). Insert attached bar on Chair Back (G) into hole in back of Seat Mechanism (L). Tighten the hand tighten knob on the Seat Mechanism (L) until Chair Back (G) is secure.

Step 6: Place Chair Seat (H) onto Chair Base (I) by inserting top of Gas Lift (E) into the hole in the middle of the Seat Mechanism (L). Push down on Chair Seat (H) to secure to Chair Base (I).

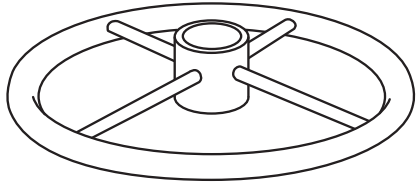
ofm
Furniture For The Real Office™

161 Tradition Trail Holly Springs, NC, 27540
800-520-7471 (voice) 919-362-4765 (fax)
919-303-6389 (voice) www.ofminc.com
support@ofminc.com

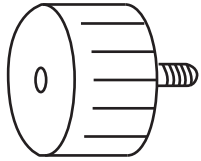
Model DK-2 Drafting Kit Assembly

Parts Listing

A
Circular Foot Rest
1 Unit



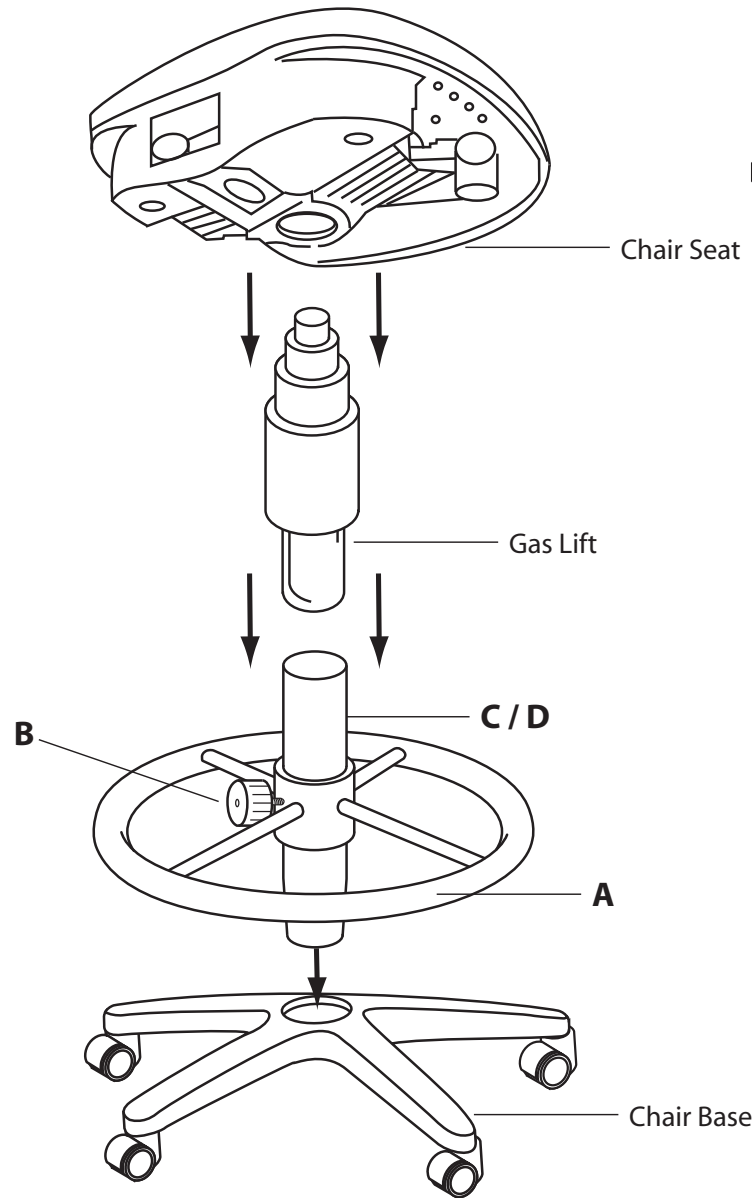
B
Tension Knob
1 Unit



C
9" Extension Tube
1 Unit



D
12" Extension Tube
1 Unit



Assembly Instructions



Please read all instructions before assembly.
Prior to assembly, select only one Extension Tube for desired Height

9" Extension Tube will change seat height from 26.25"-30"
12" Extension Tube will change seat height from 29.25-33"

- Step 1:** Slide the Circular Foot Rest (A) over the smaller tapered end of your chosen Extension Tube (C / D).
 - Step 2:** Screw in Tension Knob (B) and tighten to lock Foot Rest (A).
 - Step 3:** Place the tapered end of Extension Tube (C / D) into your Chair Base.
 - Step 4:** Insert bottom of Gas Lift Cylinder into the top end of the Extension Tube (C / D).
 - Step 5:** Place the Chair Seat onto the Gas Lift by inserting top of Gas Lift into the hole in the Seat Mechanism.
 - Step 6:** Press down firmly to secure the chair.
- Note:** Save the left over extension tube for future use.